



Semi-automatic cleaning system

for open cooling milk tanks



[fb.com/realrio](https://www.facebook.com/realrio)



[@realrio](https://www.instagram.com/realrio)



[realrio.com.br/en](https://www.realrio.com.br/en)



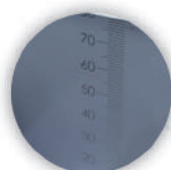
+55 49 3664.6100

SEMI-AUTOMATIC CLEANING SYSTEM FOR OPEN COOLING MILK TANKS.

Equipment developed to solve the necessity for a semi-automatic cleaning system for milk cooling tanks in open models.

✓ Technical Features

- Compatible with all models of open milk cooling tanks;
- Easy installation;
- More efficient use of chemicals;
- It can be used in more than one milk cooling tank.



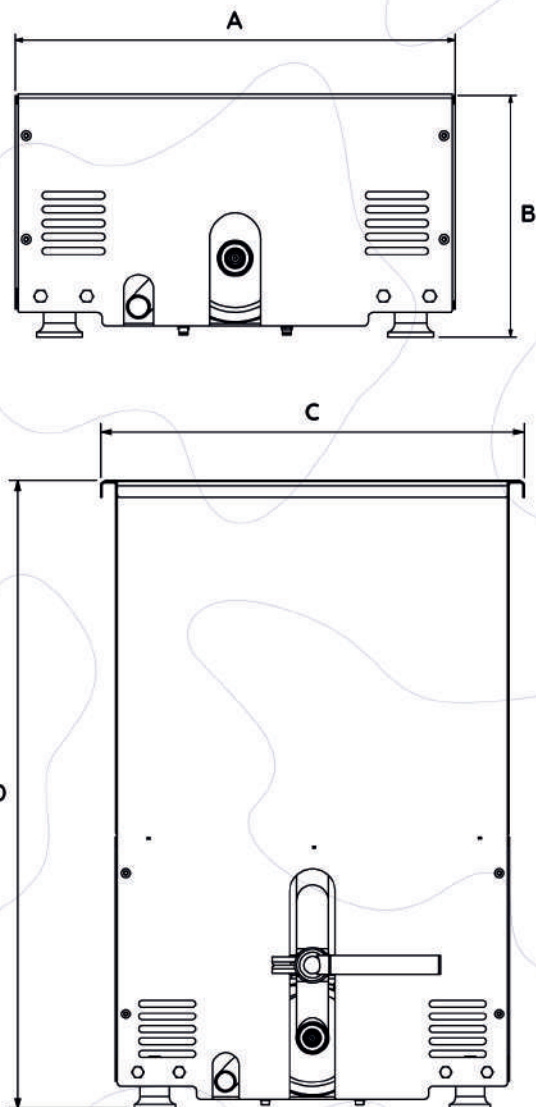
Reservoir Ruler: Laser-engraved volume indicator on the reservoir.



A system with reservoir: Indicated for those looking for more efficiency and speed in the process. A step can be prepared while another is running due to the valve.



A system without reservoir: As it does not have a reservoir, it is necessary to use the milk cooling tank as a reservoir. Dosing is carried out directly in the cooler.



Open horizontal cleaning system

1,000L to 2,500L single spray

- 8313 - with reservoir
- 8374 - without reservoir
- 8382 - Pre-installed with reservoir
- 8378 - Pre-installed without reservoir

2,500 to 6,000L double spray

- 8316 - with reservoir
- 8375 - without reservoir
- 8383 - Pre-installed with reservoir
- 8379 - Pre-installed without reservoir

Open vertical cleaning system

1,000 a 2,000 liters/day Internal diameter 1,200 a 1,500mm

- 8150 - with reservoir
- 8372 - without reservoir
- 8380 - Pre-installed with reservoir
- 8376 - Pre-installed without reservoir

2,500 a 4,000 liters/day Internal diameter 1,600 a 2,200mm

- 8329 - with reservoir
- 8373 - without reservoir
- 8381 - Pre-installed with reservoir
- 8377 - Pre-installed without reservoir

Measurements system with/without reservoir

Description	Measure
Width (A)	47,6 (cm)
Height (B)	26,2 (cm)
Width (C)	51,02 (cm)
Height (D)	75,7 (cm)
Depth	43,6 (cm)

Subtitle

- A: Width without reservoir
- B: Height without reservoir
- C: Width with reservoir
- D: Height with reservoir

